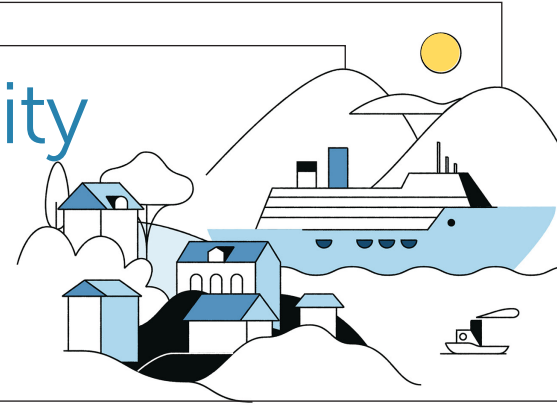


## WINTER MED PROJECT WEBINAR

# Measuring the sustainability of tourism activities through data indicators



**04 June 2020** | 10<sup>30</sup> - 12<sup>00</sup> CET

The webinar is the first in a series on good management practices for the development of sustainable and responsible tourism in Mediterranean destinations.

Sustainable development of tourism is a continuous process, and as such it is of particular importance a continuous observation and monitoring of tourism data indicators. The webinar will be conducted by the Institute of Agriculture and Tourism Poreč - Croatia (IPTPO) that will bring its experience from **MITOMED+** project that developed and tested a **system of indicators** and an **online common open platform** with the purpose to help local and regional policy makers monitor economic, social and environmental impacts of maritime and coastal tourism, and benchmark with other M&C tourism destinations.

### *Speakers:*

Kristina **Brščić** PhD-IPTPO, Danijela **Poljuha** PhD-IPTPO, Tina **Šugar** IPTPO, Katarina **Lovrečić** IPTPO  
Dalibor **Cvitković** Director of the Tourist Board of the City of Mali Lošinj

Viewers will be able to send the questions before, during or after the **webinar**, with answers being provided by speakers during the final **Q&A session**

Participation is open through previous registration

A link for participating in the webinar will be sent after the deadline for registration

**BOOK YOUR SEAT HERE!**

<https://winter-med.interreg-med.eu/> - [wintermed@asev.it](mailto:wintermed@asev.it)